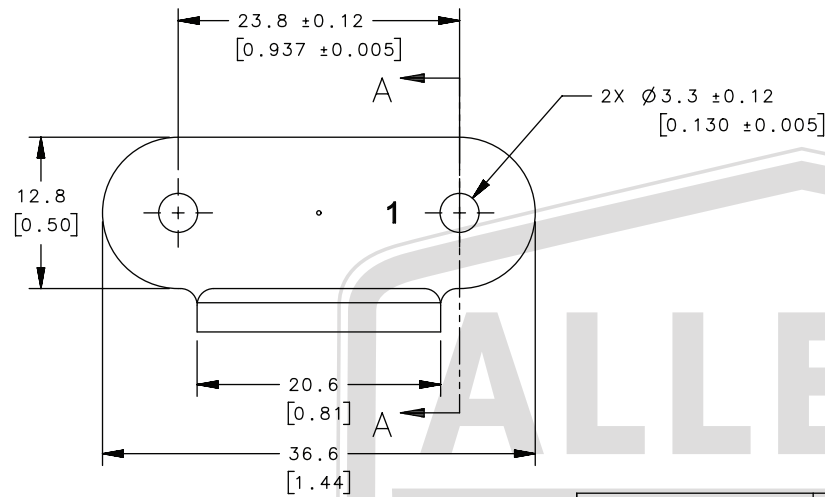
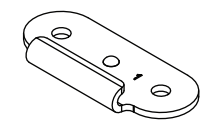
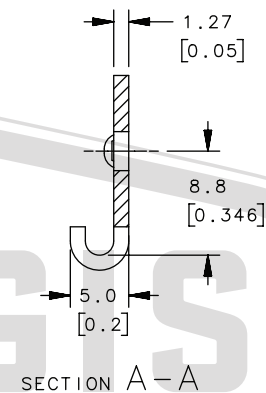


APPROVAL - CUSTOMER NAME & SIGNATURE

DATE



REVISION HISTORY			
REV	DATE	BY	DESCRIPTION
G	04JUN2009	ACH/MJS	PRN: P2009-0661



SCALE 1:1

K3-0334-89	STEEL	BLACK E-COAT PLUS BLACK POWDER COAT	
K3-0334-82	STEEL	NICKEL PLATE PLUS ZINC, BLACK CHROMATE	
K3-0334-70	STAINLESS STEEL	ZINC BLACK ALLOY, BLACK CHROMATE	
K3-0334-69	STEEL	E-COAT, BLACK	
K3-0334-66	STEEL	E-COAT, BLACK	
K3-0334-63	STAINLESS STEEL	BLACK OXIDE PLUS SEALER	
K3-0334-55	STAINLESS STEEL	BLACK OXIDE	
K3-0334-52	STAINLESS STEEL	NATURAL	
K3-0334-49	STEEL	BRIGHT CHROME	
K3-0334-46	STEEL	BRIGHT NICKEL PLATE	
K3-0334-44	STEEL	BRIGHT NICKEL PLATE	
K3-0334-12	STEEL	ZINC PLATE, OLIVE DRAB, CHROMATE DIP	
K3-0334-09	STEEL	ZINC PLATE, BLACK CHROMATE DIP	
K3-0334-08	STEEL	ZINC PLATE, YELLOW, CHROMATE DIP	
K3-0334-07	STEEL	ZINC PLATE, BRIGHT CHROMATE DIP	
K3-0334-00	STEEL	NATURAL	
SOUTHCO PART NUMBER	MATERIAL	FINISH	

**ALLEGIS**

1-866-378-7550

MATERIAL:

Steel

DRAWING NO.:

K3-0334-07

FINISH:

Zinc Plate, bright chromate

REV.:

1:1

DATE:

5/30/2019